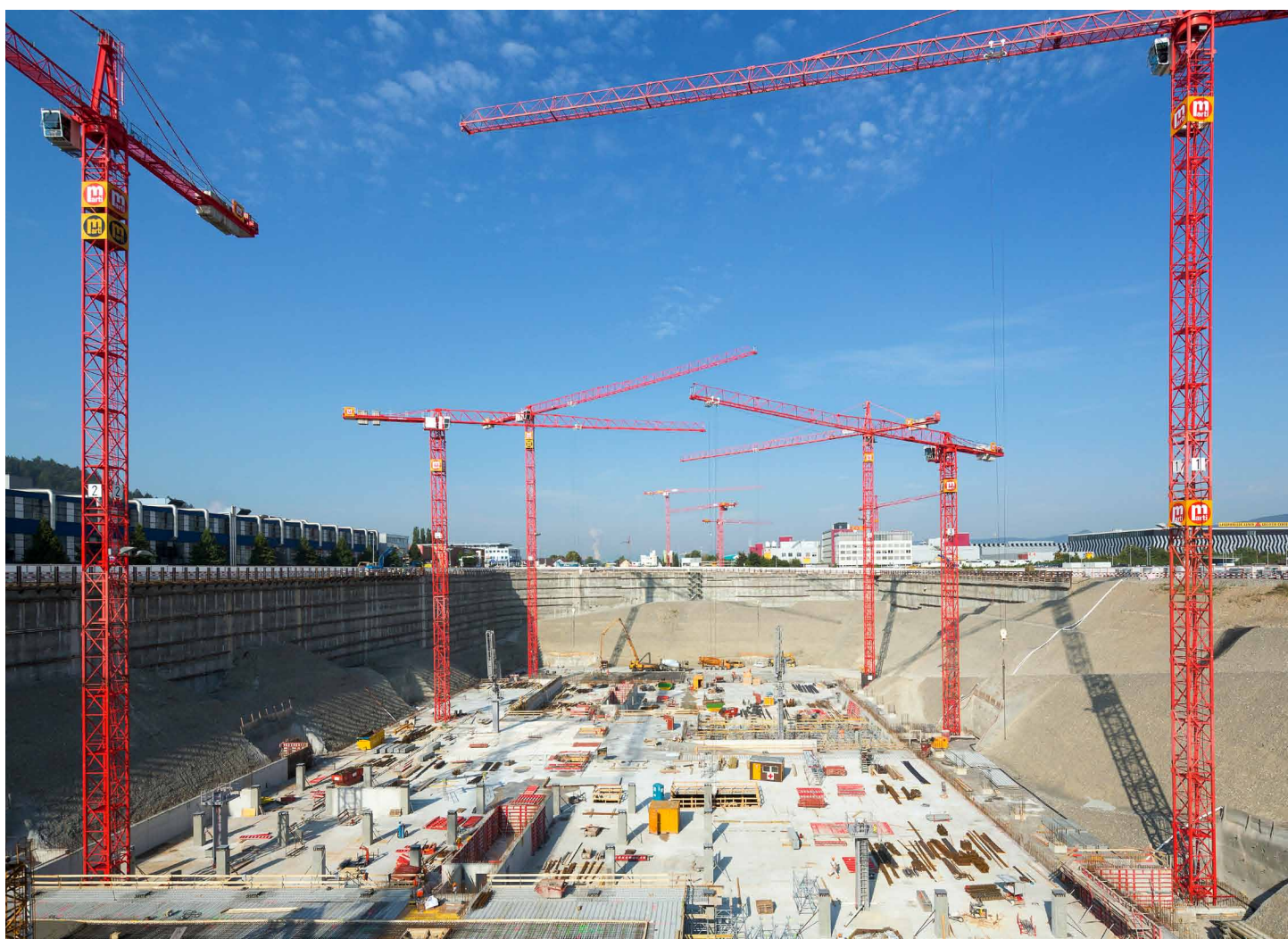
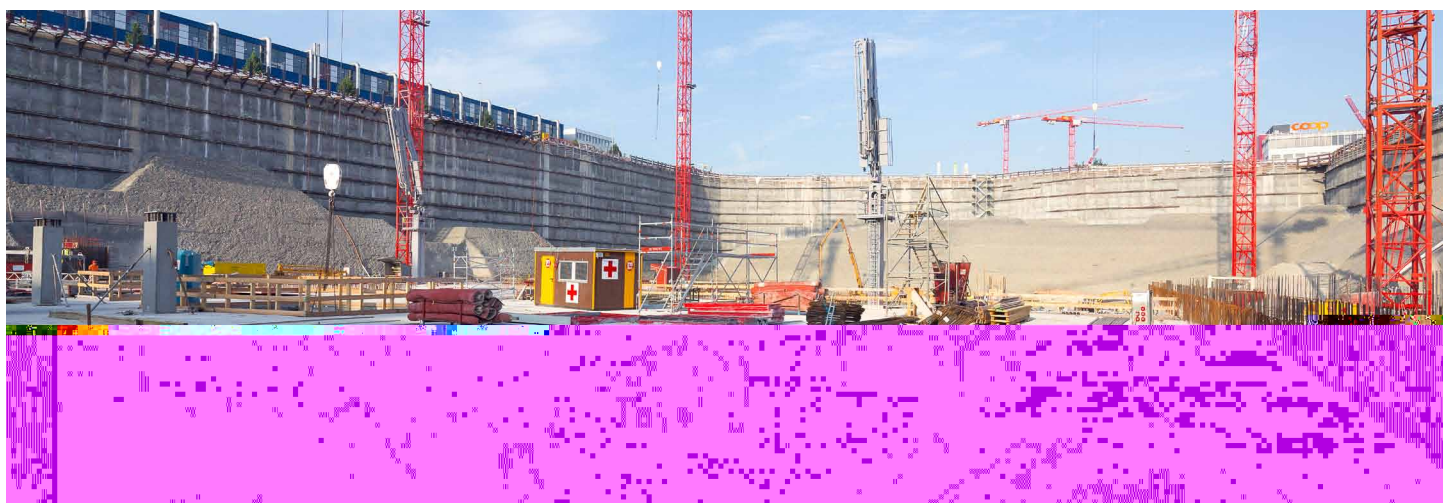
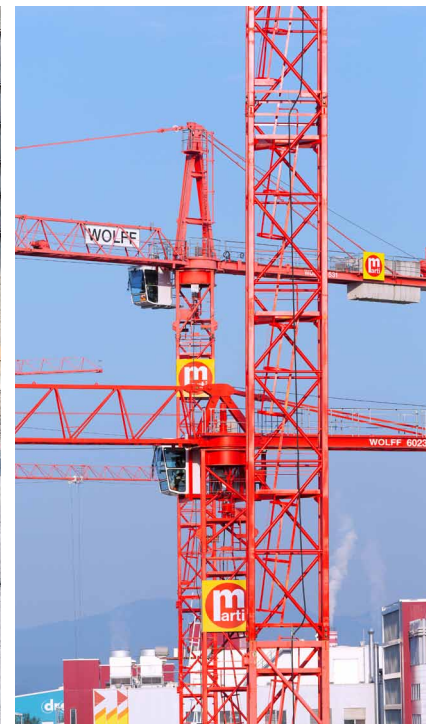
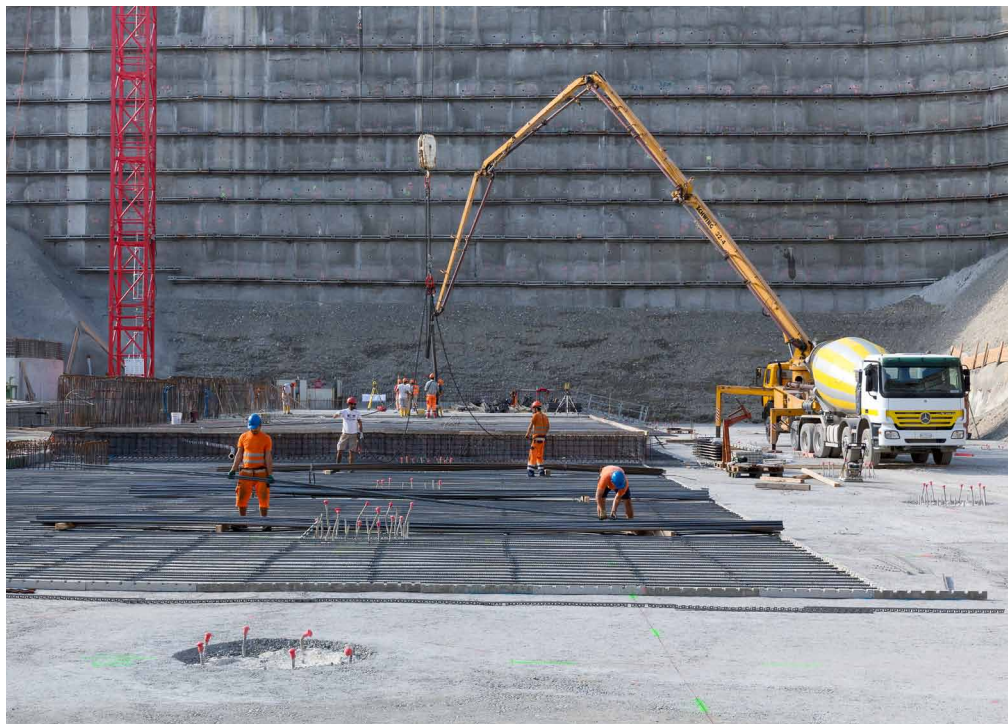


Impressive scale of the Coop distribution centre



COOP IS BUILDING A NEW DISTRIBUTION CENTRE AT SCHAFISHEIM IN AARGAU CANTON. IN FUTURE, THIS CENTRE WILL SUPPLY NEARLY ONE-THIRD OF ALL COOP RETAIL OUTLETS IN SWITZERLAND. MARTI IS THE GENERAL CONTRACTOR AND BUILDER.



THE KEY POINTS IN BRIEF

Coop's logistic project comprises several new buildings with a total gross floor space of 240'000 m². 350'000 m³ of gravel were excavated for the foundations of the biggest single building which will accommodate a vast bakery, a frozen food store and a centre for returned empties. The distribution centre will open at the end of 2015 at a cost of 600 million francs.

Building owner

Coop Cooperative, Property Management, Bern

General Contractor:

Marti Generalunternehmung AG, Bern

Subcontractors GC

Marti AG, Bauunternehmung, Zurich
Marti AG, Bauunternehmung, Bern

Contact Marti Holding AG

Marketing & Communication
Tel.: +41 31 388 75 75
media@martiag.ch